



Intestinal stasis in cattle

Dr. M. Ranjithkumar, PhD.,

Assistant Professor,

Department of Clinical Medicine, Madras Veterinary College,
Chennai - 600 007, Tamilnadu.



Unit : Traumatic Reticulo Peritonitis and Pericarditis
Lesson : 1

Introduction to Traumatic Reticulo Peritonitis and Pericarditis

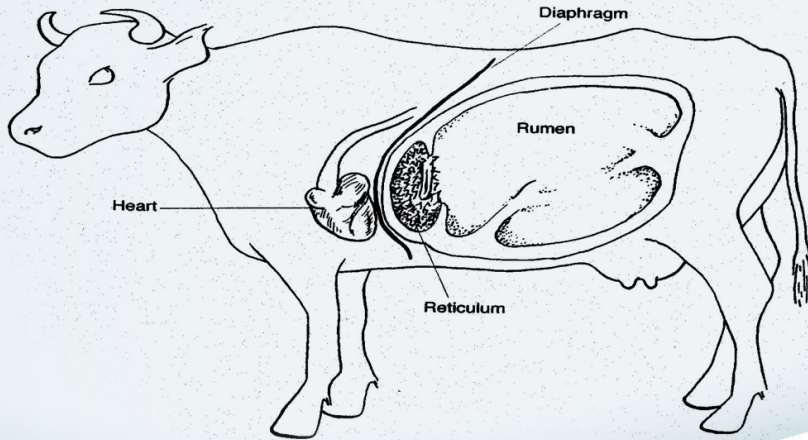
Dr. M. Ranjithkumar, PhD.,

Assistant Professor,
Department of Clinical Medicine, Madras Veterinary College,
Chennai - 600 007. Tamilnadu

Introduction

- Penetration of Pericardium & Peritoneum by Foreign bodies
- Common in cattle & buffaloes
- Cattle don't use their lips
- Out-swept curling action of tongue
- Very little mastication
- Honey comb shape reticulum favors it

Anatomy of organs



Honey comb pattern of Reticulum



Cont...

- Metals gravitate in to reticulum directly
- Pressure of the fetus during pregnancy
- Pica in animals predispose them
- Most common sites of penetration
 - Anterio-ventral wall
 - Ventral wall
 - Anterior wall

What happens to FB?

- Lie freely
- Fixed in position
- After 72 hours necrosis of tissue
- Corroded away in 6 wks to 1 yr
- Penetration of serosa - Infection
- FB may fall back into reticulum - Resolution of the infection

Epidemiology

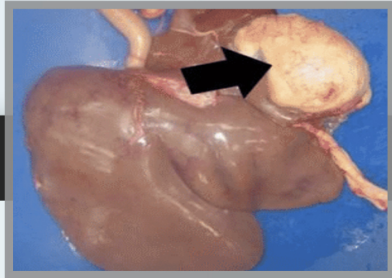
- Common in developing countries
- 90% cases in dry season pastured animals
- Higher in females over 1 year of age
- Final term of pregnancy to 1 month post calving
- Prevalence in India is 14% (Sharma et al., 2015)
- Reticular abscess was more in buffaloes

Where it travels?

- Cranially to heart – Pericarditis
- Lateral & ventral - Peritonitis
- Liver – Medially & dorsally - Abscess
- Spleen – Laterally & dorsally – Abscess
- Lungs – Pleuropneumonia
- Coronary artery – Cardiac tamponade
- Reticular vein – Fatal hemorrhage

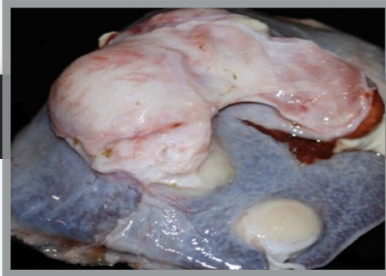
Where it travels?

- Cranially to heart – Pericarditis
- Lateral & ventral - Peritonitis
- Liver – Medially & dorsally - Abscess
- Spleen – Laterally & dorsally – Abscess
- Lungs – Pleuropneumonia
- Coronary artery – Cardiac tamponade
- Reticular vein – Fatal hemorrhage



Liver Abscess

Spleen Abscess



Pneumonia in a cow



What are materials ?

- Needles
- Pieces of wire
- Wood splinters
- Staples
- Non-magnetic copper wires
- Metal components of mixers
- Hair clip
- Wire bristle brush
- Other pointed metallic FBs

Recovered materials





*Thank
you*