

# Important papaya diseases

- Damping off
- Ring spot
- Foot Rot
- Leaf Curl
- Papaya Mosaic

# Damping off (*Rhizoctonia solani*)

**Survival:** Soil

## **IPM practices:**

- **Cultural:** Well-drained soil should be used for planting and the crop should not be excessively irrigated.
- **Biological:** Before sowing the seeds should be treated with fungal culture of *Trichoderma viride* (3-4 g/kg of seed)
- **Chemical:** Seed treatment with Captan (3 g/kg of seed) to protect the newly emerging seedlings.



# Foot Rot of Papaya (*Pythium aphanidermatum*)

**Survival:** Soil borne

**IPM practices:**

- **Cultural:** Irrigate by the ring method to avoid water coming in direct contact with the stem. Prevent water logging in new plantings
- **Biological:** Apply *Trichoderma viride* (15 g/plant) mixed in well-decomposed FYM in the root zone at the time of planting.
- **Chemical:** Drenched soil with 2-3 L of Copper Oxychloride (3 g/L) regularly at 15 days interval from the time of planting. During fruit formation, plants should be sprayed with the same solution or Mancozeb (2.5 g/ L) at the same time interval.
- In disease attack in existing crops, the rotted portion of the plant should be scraped and Copper Oxychloride or Bordeaux paste should be applied.

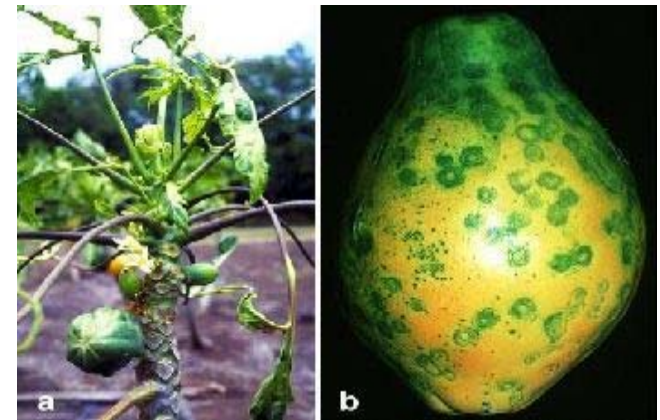


# Ring spot (*Papaya ring spot virus*)

**Survival:** Infected plants

**IPM practices:**

- **Cultural:** Early detection of infected plants and prompt removal can check the spread of the disease.
- **Chemical:** Aphids can be controlled by application of Carbofuran (1 kg a.i./ha) in the nursery bed at the time of sowing seeds followed by 2-3 foliar sprays of Phosphamidon (0.05%) at an interval of 10 days starting from 15-20 days after sowing.



# Leaf Curl of Papaya (*Tobacco leaf curl Virus*)

**Survival:** Infected plants

**IPM practices:**

- **Cultural:** Removal and destruction of the affected plants is the only control measure to reduce the spread of the disease.
- **Chemical:** Checking the population of white flies also can reduce the infection severity. Soil application of Carbofuran (1 kg a.i./ha) at the time of sowing and 4-5 foliar sprays of Dimethoate (0.05%) or Metasystox (0.02%) or Nuvacron (0.05% ) at an interval of 10 days effectively controls the whitefly population.



# Papaya Mosaic (*Papaya mosaic virus*)

**Survival:** Infected plants

**IPM practices:**

- **Cultural:** Good field sanitation such as removal and destruction of affected plant reduce the spread of the disease.
- **Chemical:** Losses can be minimised controlling the population of aphid. Application of Carbofuran (1 kg a.i./ha) at the time of sowing seeds followed by 2-3 foliar sprays of Phosphamidon (0.05%) at an interval of 10 days starting from 15-20 days after sowing effectively checks the population of aphids.

