



REPEAT BREEDING SYNDROME IN COWS

Lecture 2

Fertilization failure and Early embryonic mortality

Content Creator

Dr. M. Selvaraju, Ph.D.,
Dean

Veterinary College and Research Institute, Namakkal 637 002
TANUVAS, Namakkal

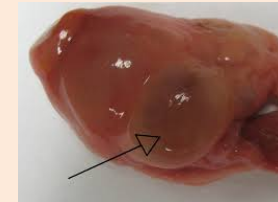
drmselvaraju1969@gmail.com; 8778121093



Fertilization failure

Constitutes 15% of the reproductive wastage

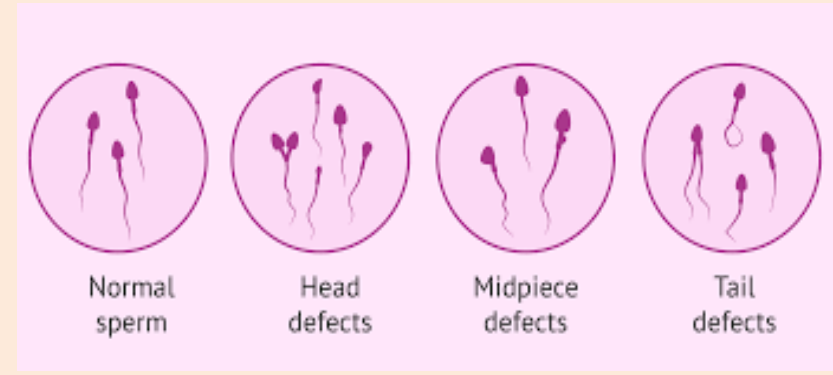
- Ovulatory defects
- Ageing of the ovum
- Defective ovum
- Defective sperms
- Failure of union of male and female gamete





Fertilization failure

- Ovaro-bursal adhesions and Tubal obstructions
- Stress
- Anti-sperm antibodies
- Improper semen collection





Fertilization failure



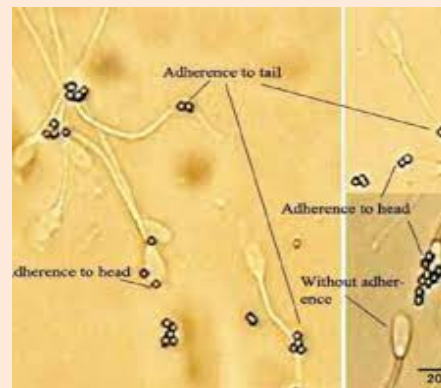
Segmental aplasia



Hydrosalpinx



Ovaro – bursal adhesions



Anti – sperm antibodies



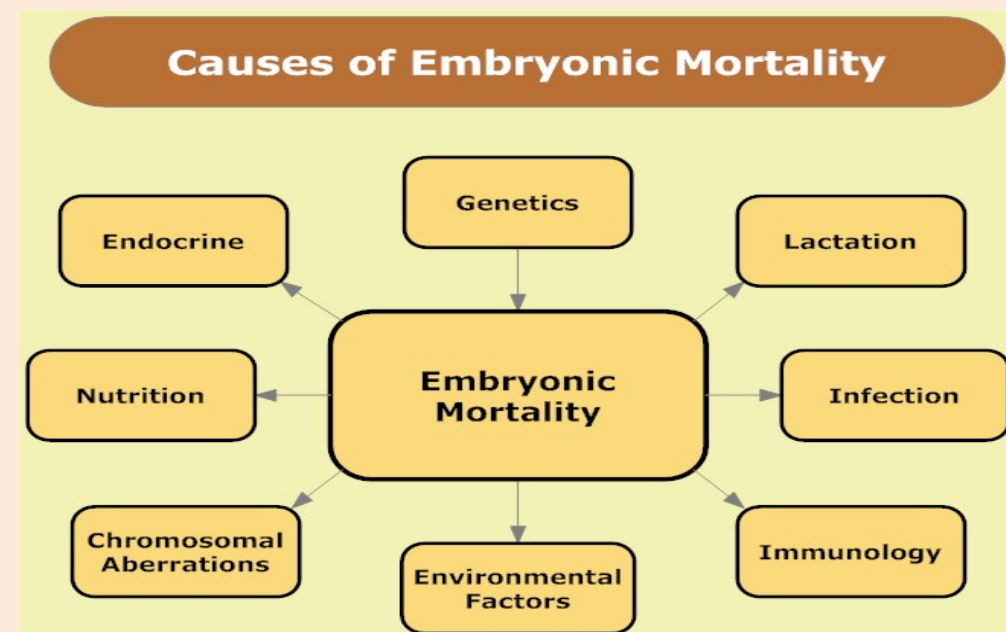
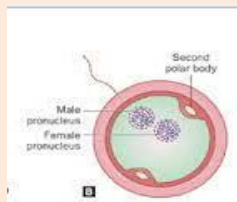
Early Embryonic Death

Constitutes 25% of the reproductive wastage

- Chromosomal aberrations



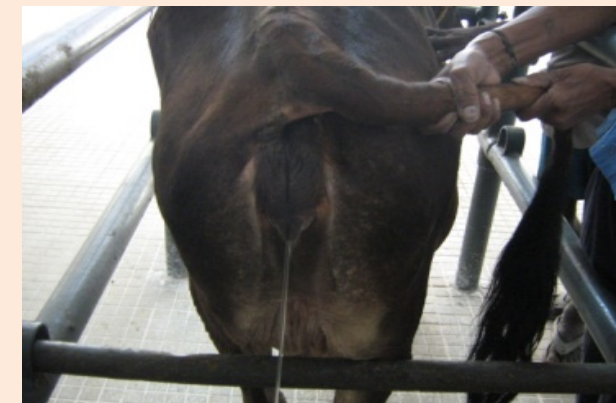
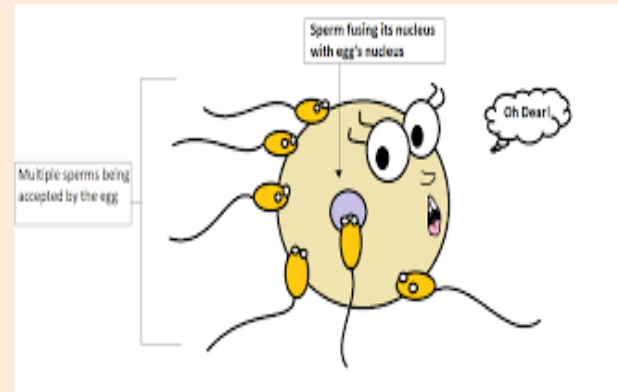
- Aged ovum





Early Embryonic Death

- **Polygyny**
- **Specific infections**
- **Non-specific uterine infections**



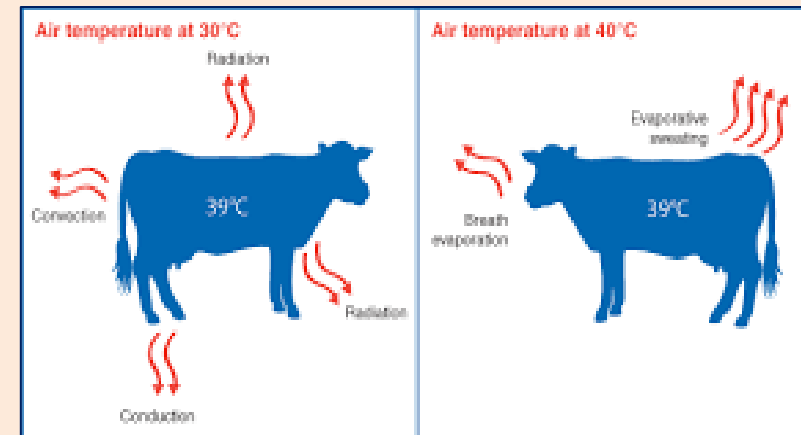


- Over-crowding of embryos in the uterus



- Nutritional deficiencies

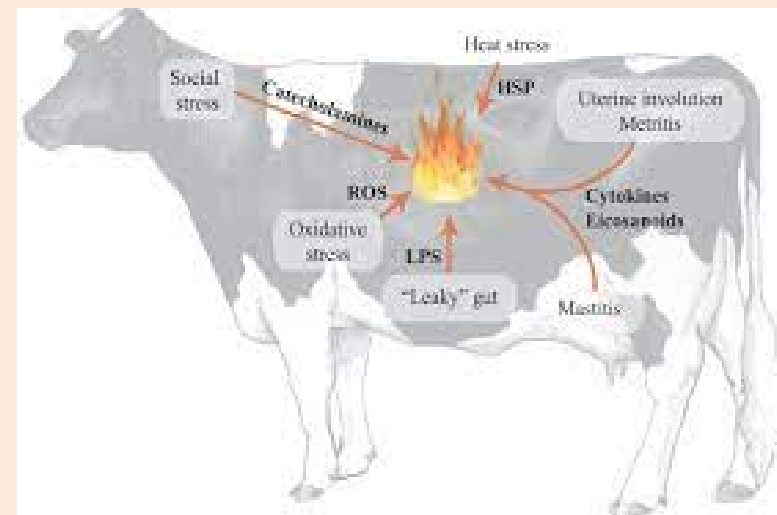
- Environmental factors



- Semen contaminated with infectious agents



- Introduction of infection – AI
- Oxidative stress
- Hot sunlight
- Endocrine dysfunction
- Sub-clinical endometritis





Summary of Day 2 Lecture

- EEM
- FF

THANK YOU