



Tapeworms of equines

Dr.A.Sangaran, M.V.Sc., Ph.D.,

Professor

Department of Veterinary Parasitology

Madras Veterinary College,

Chennai - 600 007.



TAPEWORMS OF EQUINE

ANOPLOCEPHALA PERFOLIATA

Common name

Dwarf tapeworm of horse, '*lappet tapeworm*'.

Location

Small and large intestine

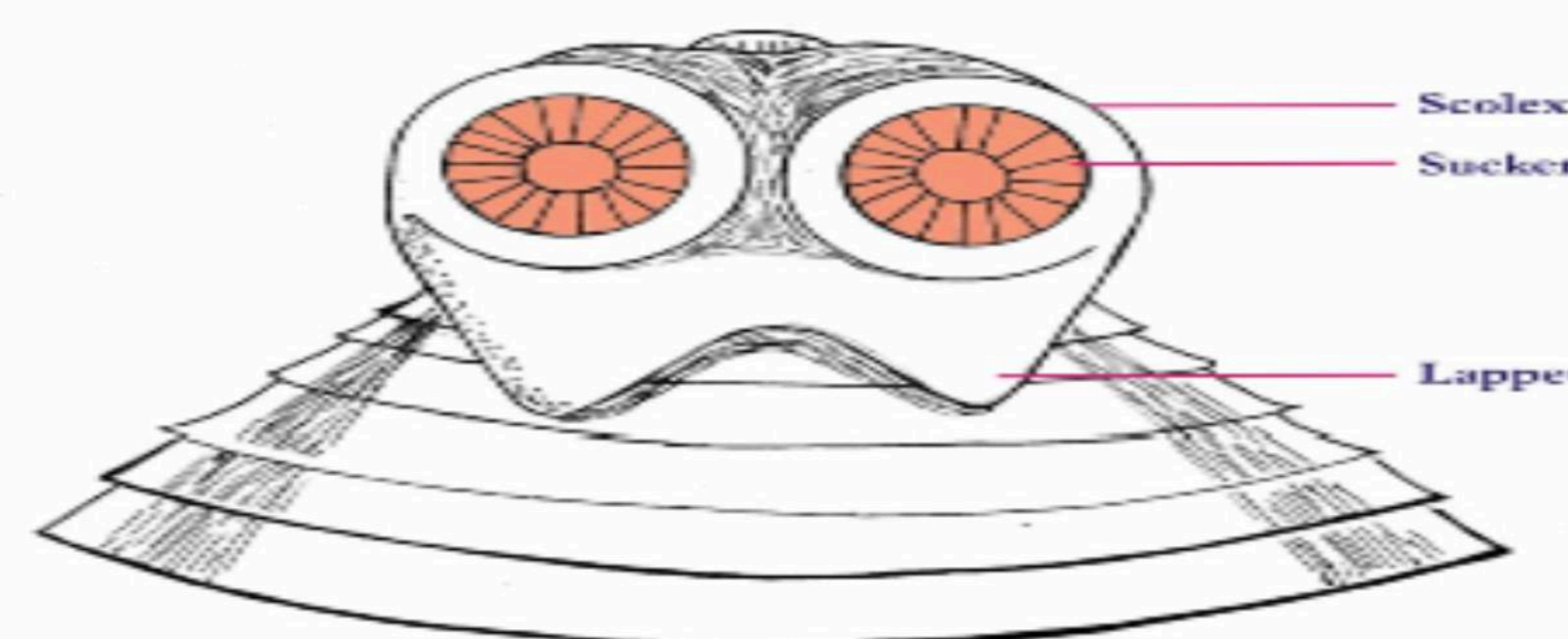
ANOPLOCEPHALA PERFOLIATA

Morphology

- ▶ Adults are upto 5 – 8 cm in length.
- ▶ Scolex has lappet behind the each sucker.
- ▶ Segments are wider than long.
- ▶ Segments have single set of reproductive organ.
- ▶ Genital pore is marginal.



Anoplocephala perfoliata
(scolex)





ANOPLOCEPHALA PERFOLIATA

Life cycle

- ▶ Oribatid mite (grass/soil mite) act as a I/H - common species *Scheloribates laevigatus*.
- ▶ **Eggs** are passed in the faeces of the host and are ingested by oribatid mite.
- ▶ Eggs hatch out in the I/H and develops into cysticercoid in about 4 months.
- ▶ Final host get the infection by ingestion of infected mite along with herbage.
- ▶ Prepatent period is 4 to 6 weeks.



ANOPLOCEPHALA PERFOLIATA

Pathogenesis

- ▶ **Common tapeworm of horse. Light infection cause no clinical signs.**
- ▶ **Large numbers causes ill health, unthriftiness and even death may occur. Usually the worms are localized in the ileo - caecal orifice, it causes partial occlusion of ileo-caecal orifice.**
- ▶ **At the site of scolex attachment, a small dark depressed ulcerative lesion may be seen.**
- ▶ **Perforation of intestine also observed.**

Treatment

- ▶ **Niclosamide: 88 mg / Kg b wt. (Oral)**
- ▶ **Bithionol: 7 mg / Kg b wt. (Oral)**



(*Anoplocephala magna* and *paranoplocephala mamillana*)

► **Species: *Anoplocephala magna***

- **Host:** Equines
- **Location:** Small intestine
- **Intermediate stage:** Cysticercoid
- **Intermediate host:** Oribatid mites
- **Scolex**

► Lappets are absent.

► **Species: *Paranoplocephala mamillana***

- **Host:** Equines
- **Location:** Small intestine
- **Intermediate stage:** Cysticercoid
- **Intermediate host:** Oribatid mites
- **Scolex**

► Scolex is narrow.

► Opening of suckers are slit like.

► **Lappets are invariably absent.**



Thank you